



## RITSEC Club Sponsorship Proposal

# Table of Contents

<b>RITSEC Club Sponsorship Proposal</b>	<b>1</b>
Table of Contents	2
Find Us Online	3
Contact Us	3
What is RITSEC?	4
<i>Our Members (2020-2021)</i>	4
<i>Education</i>	5
<i>Research</i>	6
Events	7
<i>IRSeC</i>	7
<i>RITSEC CTF</i>	7
<i>ISTS</i>	8
Interest Programs	9
<i>WiCyS Student Chapter</i>	9
<i>Operations Program</i>	9
<i>RITSEC Red Team</i>	9
Interest Groups	9
Activities	10
<i>Mentorship Program</i>	10
<i>Conferences</i>	10
Sponsorship Tiers	11

## Find Us Online

### Website

<https://www.ritsec.club/>

### Twitch (Weekly Meetings, 12-4pm EST)

<https://www.twitch.tv/ritsec>

### YouTube (Archived Talks)

<https://www.youtube.com/c/RITSEC>

## Contact Us

### Sophia Larson

*Director of Public Relations*

[ritsecclub@gmail.com](mailto:ritsecclub@gmail.com) / [sil6343@rit.edu](mailto:sil6343@rit.edu)

### Anthony Iopollo

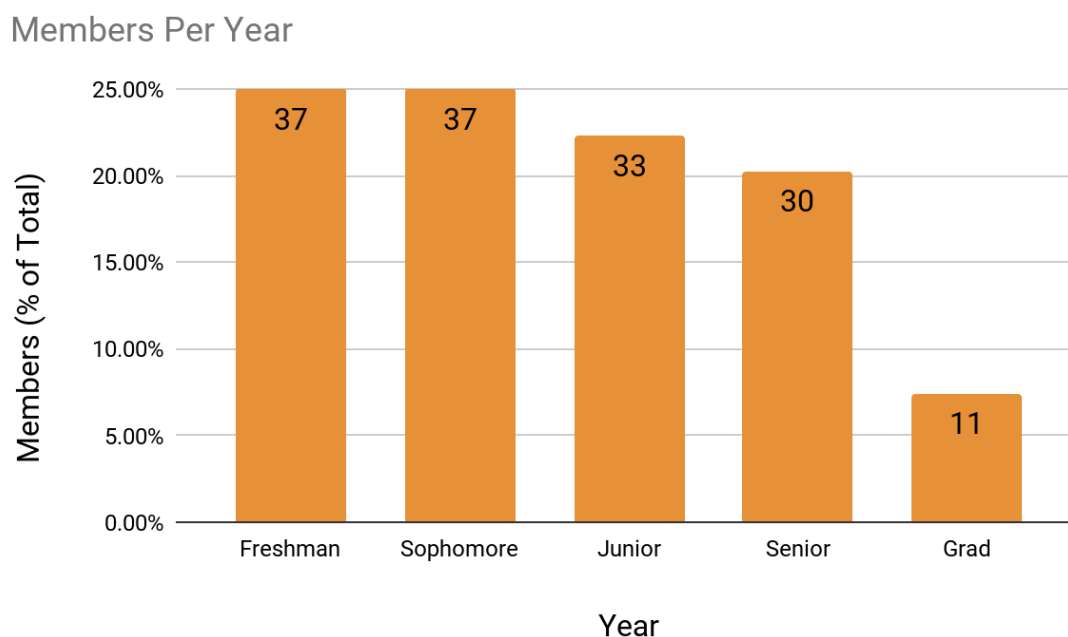
*President*

[ritsecclub@gmail.com](mailto:ritsecclub@gmail.com) / [aji4345@g.rit.edu](mailto:aji4345@g.rit.edu)

## What is RITSEC?

RITSEC is a student club dedicated to teaching "Security Through Community." We educate and prepare RIT students for the field of computing security. We believe security is for anyone who wants to learn and center our activities around multiple aspects of security. This includes team-based competitions, hands-on training, student-run research, and sponsor talks. Our security exercises cover a wide variety of areas in computing security, such as: Windows and Linux operating systems, penetration testing, competition offense and defense, social engineering, web security, networking services, reverse engineering, and much more. We also host multiple security competitions every year, giving our students the opportunity to train in a simulated attack scenario. Our members also socialize with the larger security community at conferences.

## Our Members (2020-2021)

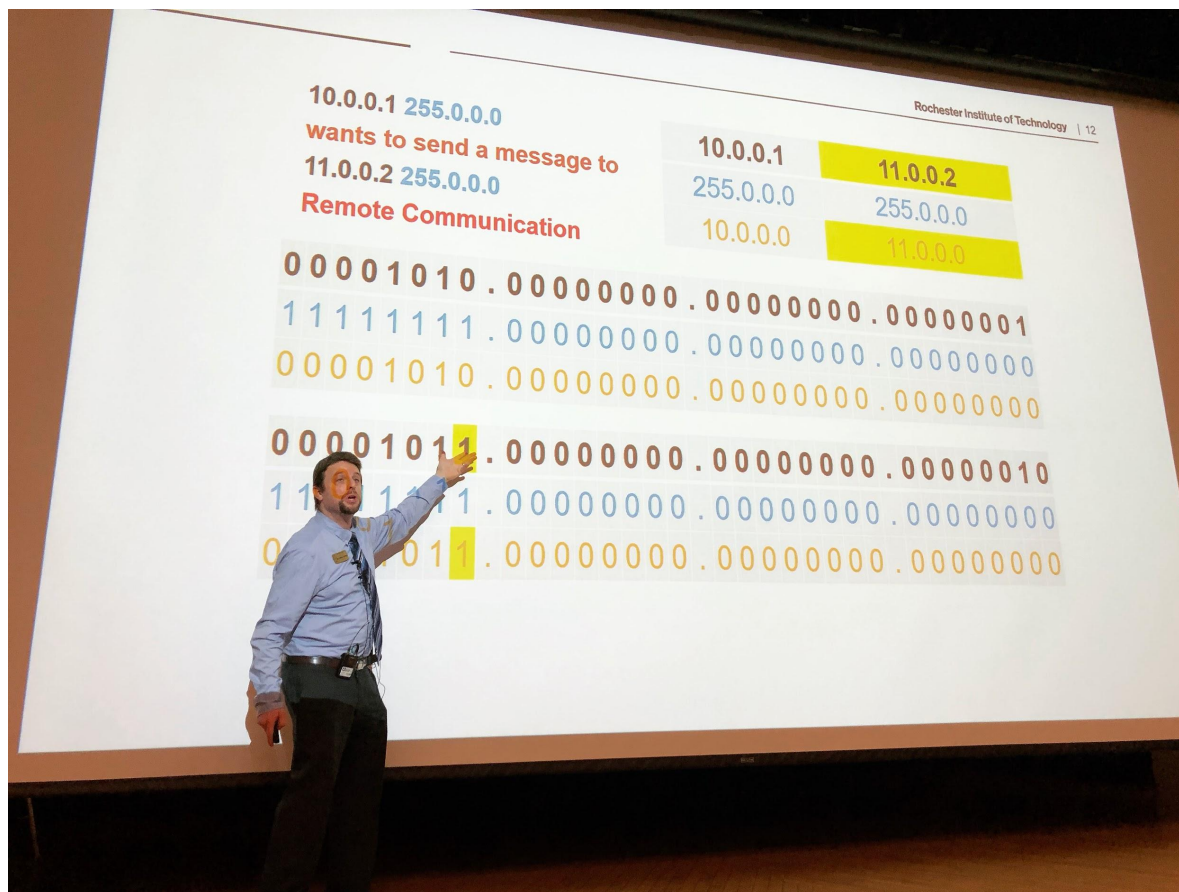


## Education

The first half of our weekly meetings (from 12pm - 2pm ET) are for Education alongside a related demo. This section starts with a student or guest speaker giving an hour long presentation introducing a security related topic. The speaker is typically well-versed in the topic and provides a unique perspective on the subject.

We create Capture the Flag (CTF) challenges from these topics—called “demos”—which are open for all members to complete following the presentation. The demos are split into three tiers: easy, medium, and hard. Easy demos can be solved by listening to the week's Education topic, while hard demos involve research and ingenuity to solve. This structure is set up to give members hands-on experience with the topic at hand, and to reinforce research, critical-thinking, and problem-solving skills. These demos culminate in a semester-long CTF competition, which provides members with a healthy dose of competition and a helpful learning resource.

Guest Speaker Professor Weissman - Introduction to Networking Education Talk



## Research

Many of our members work on personal projects and security research during the academic year. RITSEC's Research section—the second portion of our weekly meeting (2pm - 4pm ET)—is where members present their research. There are usually three or four presenters each week. This section allows for club discourse and helps get other members interested in doing projects outside of class.

We also offer grants for our members, allowing them to request funding for paid services. This helps our members create amazing presentations!

Simon Buchheit - personal research presentation



## Events

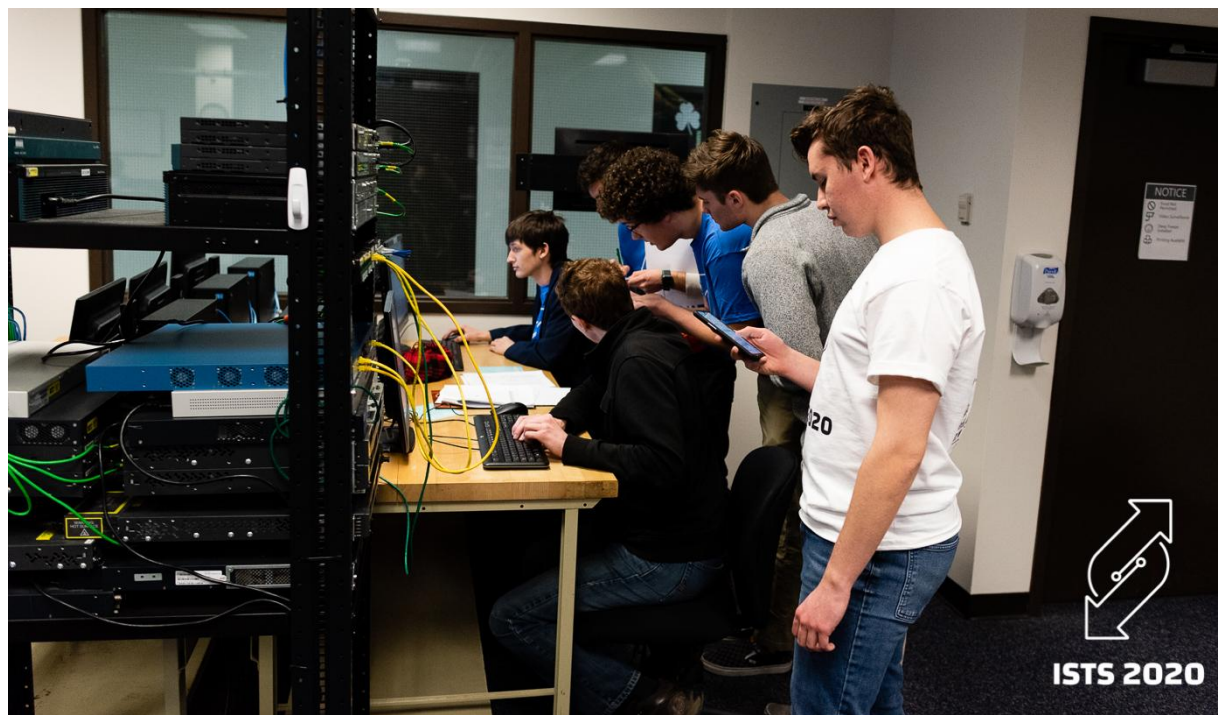
### IRSeC

IRSeC is our beginner-friendly competition that focuses on the basics of network defense and incident response. The environment exposes competitors to technologies commonly found in industry, while giving them the opportunity to learn. They will be asked to keep business critical services up and available. Competitors will also be asked to complete various assignments and tasks, called injects, which are similar to day-to-day business tasks. While handling these aspects, the student-led RITSEC Red Team attacks the competing teams to simulate threat actors. The competition is designed to teach the fundamental concepts of incident response in a fun, hands-on manner.

### RITSEC CTF

The RITSEC CTF (Capture the Flag) is a Jeopardy-style competition hosted online for sixty hours in the late spring. Participation is open to teams internationally. The CTF generally focuses on binary exploitation, reverse engineering, cryptography, forensics, programming, and web security challenges. We welcome all skill levels!

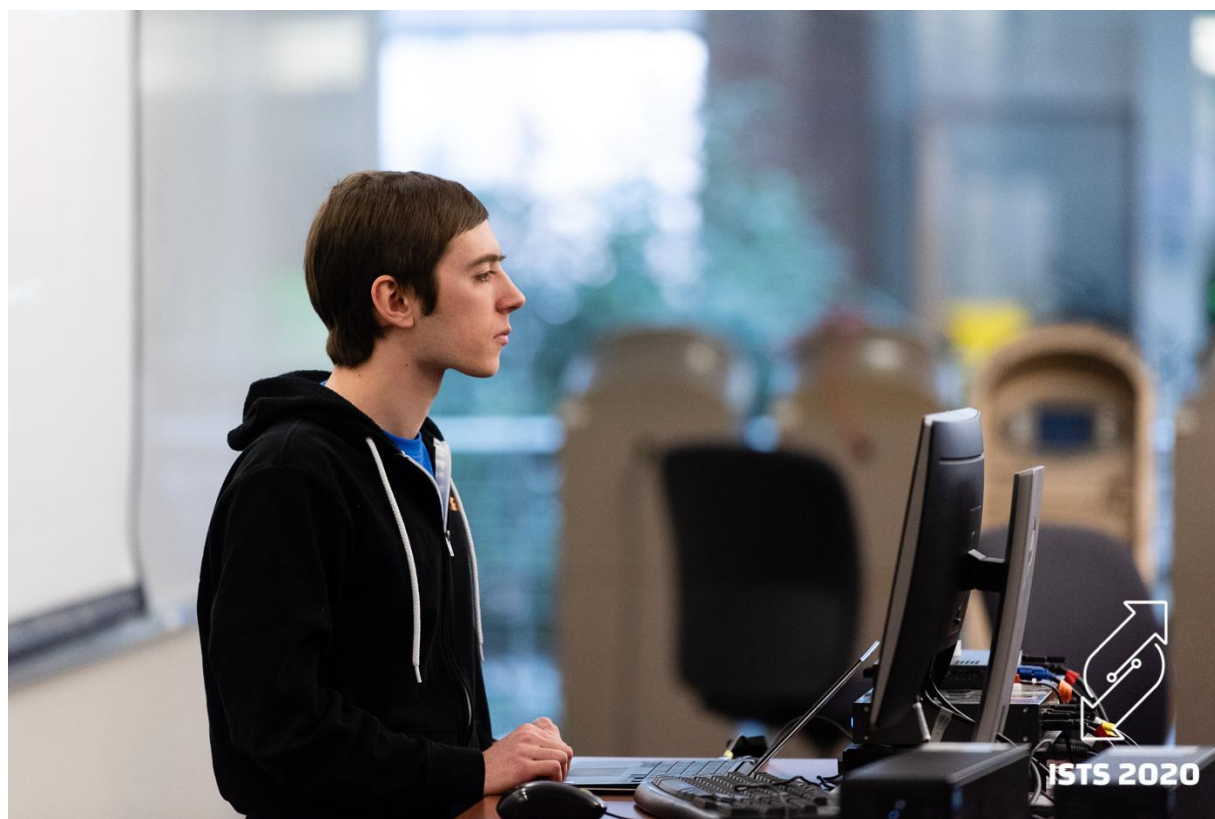
ISTS 2020 Blue Team Mid-Competition



## ISTS

The Information Security Talent Search (ISTS) is an annual three-day competition hosted in the early spring at RIT. Every year, competitors from both RIT and colleges around the country are faced with a wide variety of challenges which are designed to cover many facets of the security industry. This includes defensive and offensive capabilities, system administration, software security, networking, programming, and much more! Challenges and activities include a thematic game, Capture the Flag (CTF), King-of-the-Hill (KoTH), policy writing, incident response, and code review—all while defending a completely student-built infrastructure. This year, we are increasing the outreach of ISTS with the inclusion of qualifier rounds, which allows more schools the opportunity to participate.

Phillip Babey - presenting a report for a competition inject





## Interest Groups

### WiCyS Student Chapter

The Women in Cybersecurity Student Chapter at RIT is an all-inclusive interest group dedicated to making RIT's computing security community an encouraging environment for women. The chapter holds meetings and events for students to share their passion for security while also creating a supportive network.

### Operations Program

The Ops Program is responsible for supporting our physical infrastructure that is used for competitions, weekly Capture the Flag challenges, and other club programs. Members learn the inner workings of topics like software-defined networking, infrastructure-as-code, and datacenter hardware configuration, all on cloud-scale infrastructure.

### RITSEC Red Team

A group of students and alumni write and use custom tooling to attack competition infrastructure. This provides a challenging learning environment for blue teams.

### Team Contagion

Contagion represents RITSEC in a variety of Capture the Flag (CTF) competitions. Members compete at different ranges of difficulty and on both the national and international levels.

### Wireless

The Wireless Interest Group (aka Wiggles) focuses on all things wireless. Members focus more on cybersecurity related topics in wireless, but also go outside of this realm covering all things wireless and RF.

### Incident Response

The Incident Response Interest group is focused on all things Incident Response. The group specifically targets incident response in a corporate environment but cover technical and non technical aspects of Incident Response.

## Reversing

The Reversing Interest Group revolves around the in-depth knowledge of binary applications and ultimately reversing malware. Topics such as assembly, executable formats, malware tactics, and much more will be discussed over the entire program's running.

## Physical Security

In Physical Security Interest group members will learn all the basics of the world outside of the computer. They will learn to pick locks, alternative entry methods and many other things that computing security experts don't tend to think of when they are securing a system.

## RVAPT

At RVAPT, members learn how to find and exploit vulnerabilities in networks and associated services by hands on custom labs. Each week they learn one to two ways to break in into a network and keep building up on it through out the semester.

## Activities

### Mentorship Program

Open to all students, RITSEC's mentorship program pairs more experienced upperclassmen with younger students, having them work side-by-side on security projects. Forming connections with the upperclassmen and allowing for mentees to work together helps set the right mindset as an RITSEC member.

### Conferences


RITSEC also attends conferences! We provide resources to our members in order to attend and network at popular security conferences. For example, Shmooze-a-Member is our dedicated fund we use to pay for members rejected from the Shmooze-a-Student scholarship.

Shannon McHale - Presenting a firetalk at ShmooCon



## Sponsorship Tiers

Tier	Amount	Term
Silver	\$1,000+	One Semester
Gold	\$2,000+	One Semester
Platinum	\$5,000+	Full Year
Diamond	\$10,000+	Full Year
Titanium	\$20,000+	Full Year

	<b>Silver</b> \$1,000+ One Semester	<b>Gold</b> \$2,000+ One Semester	<b>Platinum</b> \$5,000+ Full Year	<b>Diamond</b> \$10,000+ Full Year	<b>Titanium</b> \$20,000+ Full Year
<b>Events - Get a booth and network at these events</b>		Fall	Spring		
IRSeC - Incident Response Security Competition		🔒		🔒	🔒
ISTS - Information Security Talent Search			🔒	🔒	🔒
Sponsored Event - Host a dedicated event of your own!				🔒	🔒
<b>Perks - Get some fancy perks with your sponsorship</b>		Fall	Spring		
RITSEC Newsletter - Get email updates throughout the semester	🔒	🔒	🔒	🔒	🔒
Company Logo - Put your logo on our website and all of our merch	🔒	🔒	🔒	🔒	🔒
Club Talks - Give a presentation on a topic of your choice	🔒	🔒	🔒	🔒	🔒
Competition Inject - Give a business task for blue teamers at IRSeC and/or ISTS	🔒	🔒	🔒	🔒	🔒
Speak at IG/IP - Speak with specialized Interest Groups and Interest Programs		🔒	🔒	🔒	🔒
IRSeC Tech Talk - Give a tech talk during IRSeC		🔒		🔒	🔒
Add task to NSIC - Add an assignment for the competitors		🔒		🔒	🔒
Add CTF a Challenge to ISTS - Create a challenge for the ISTS CTF			🔒	🔒	🔒
Create Your Own CTF Challenge - Create challenges for the RITSEC CTF			(2)	(3)	(4)
Keynote Presentation - Upon invitation, kickoff IRSeC and/or ISTS with a talk				🔒	🔒
Send an Item for IRSeC/ISTS Swag Bag - Give out your specialized swag				🔒	🔒
Send an ISTS Red Teamer - Join our industry red team at ISTS				🔒	🔒
Send an IRSeC Red Teamer - Join RITSEC's red team at IRSeC				🔒	🔒
Sponsor a Mentorship Group - Connect with students interested in your field				🔒	🔒
Logo on Research Swag - Get your logo on our research presentation swag					🔒
CTF Keynote Presentation - Give the keynote speech at the global RITSEC CTF					🔒

**Educational Sponsor** - Non-monetary donations. Benefits are based on donation value and compared to sponsorship level.